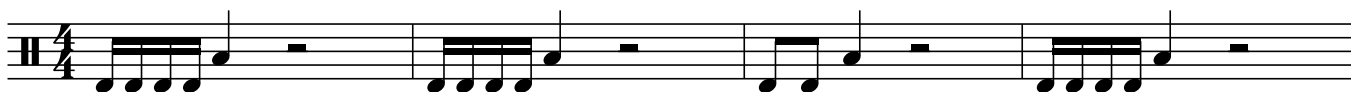


# Double Bassdrum 1

Erste 'Schritte'

www.drumattack.com  
www.stickcontrol.de



Die 16tel werden mit beiden Füßen abwechselnd gespielt, die 8tel nur mit Rechts.



Die hihat kommt gleichzeitig mit dem rechten Fuß.



Mit einer weiteren Hihatnote chließt sich der Kreis.



# Double Bassdrum 2

Einfache 8tel Grooves

www.drumattack.com  
www.stickcontrol.de

4/4

5

9

13

17

21

25

# Double Bassdrum 3

www.drumattack.com  
www.stickcontrol.de

Fills

Musical notation for the first fill, measures 1-4. The notation is on a single staff with a 4/4 time signature. It features a sequence of eighth and sixteenth notes, with 'x' marks above the notes indicating cymbal accents. The fill concludes with a double bar line.

Musical notation for the second fill, measures 5-8. The notation is on a single staff with a 4/4 time signature. It features a sequence of eighth and sixteenth notes, with 'x' marks above the notes indicating cymbal accents. The fill concludes with a double bar line.

Musical notation for the third fill, measures 9-12. The notation is on a single staff with a 4/4 time signature. It features a sequence of eighth and sixteenth notes, with 'x' marks above the notes indicating cymbal accents. The fill concludes with a double bar line.

Musical notation for the fourth fill, measures 13-16. The notation is on a single staff with a 4/4 time signature. It features a sequence of eighth and sixteenth notes, with 'x' marks above the notes indicating cymbal accents. The fill concludes with a double bar line.

Musical notation for the fifth fill, measures 17-20. The notation is on a single staff with a 4/4 time signature. It features a sequence of eighth and sixteenth notes, with 'x' marks above the notes indicating cymbal accents. The fill concludes with a double bar line.

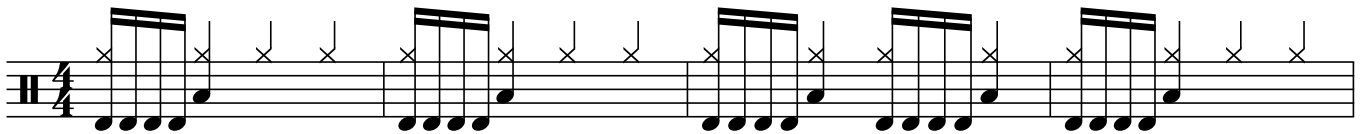
Musical notation for the sixth fill, measures 21-24. The notation is on a single staff with a 4/4 time signature. It features a sequence of eighth and sixteenth notes, with 'x' marks above the notes indicating cymbal accents. The fill concludes with a double bar line.

Musical notation for the seventh fill, measures 25-28. The notation is on a single staff with a 4/4 time signature. It features a sequence of eighth and sixteenth notes, with 'x' marks above the notes indicating cymbal accents. The fill concludes with a double bar line.

# Double Bassdrum 4

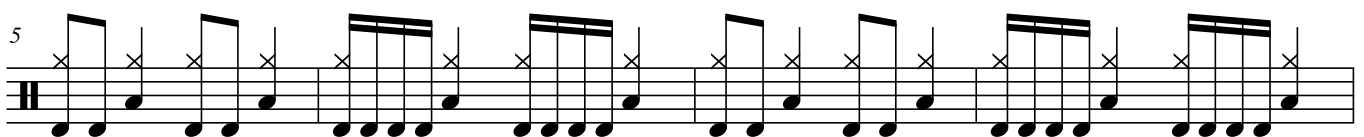
4tel Grooves

www.drumattack.com  
www.stickcontrol.de

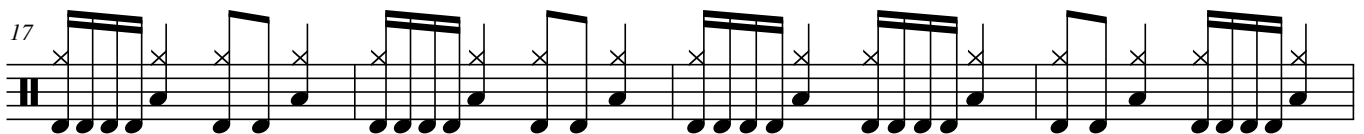
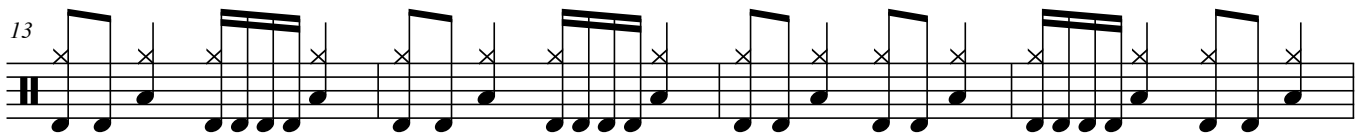


Jetzt mit Viertelnoten auf dem Riden, dann muss die rechte Hand nicht so hart arbeiten und wir können schneller spielen!

Wir mixen die neue Figur mit 4teln und 8teln in der Bassdrum:



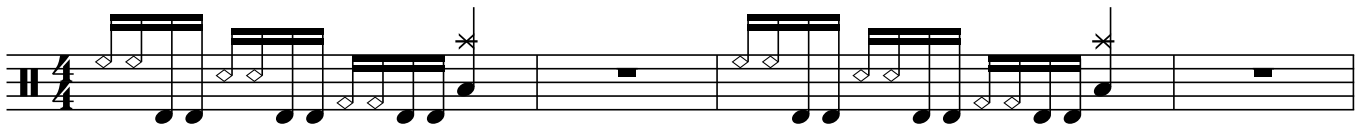
Im Folgenden weiter Beispiele. Die Viertelnoten der rechten Hand klingen auch gut auf Standtoms, Crash- und Chinabecken.



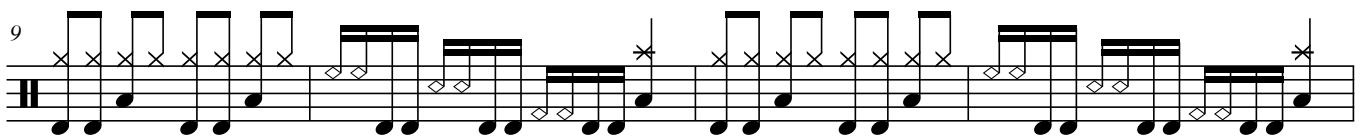


# Double Bassdrum 6

Der Pferdefill



Abwechselnd mit einem 8telrhythmus:



... mit einem 4telrhythmus:



Und einem echten Halftimefeel-Groove



4tel, 8tel und 16tel durcheinander:

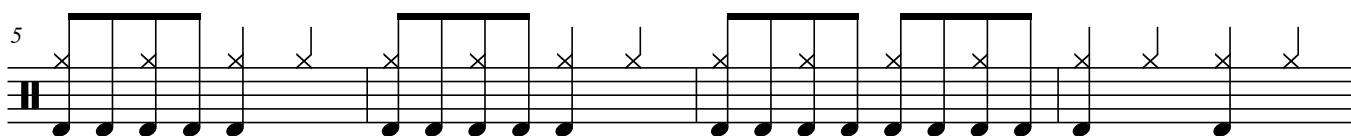


# Double Bassdrum 7

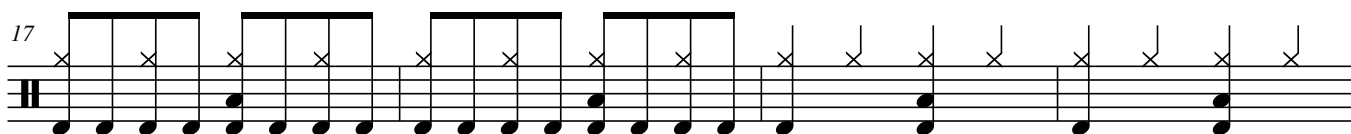
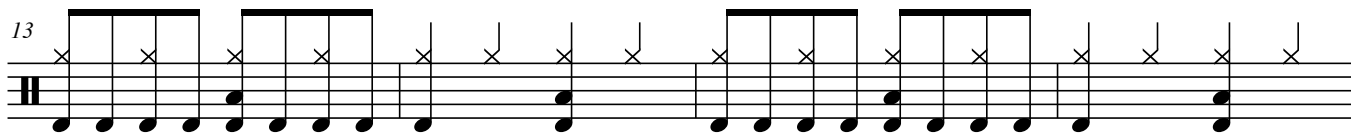
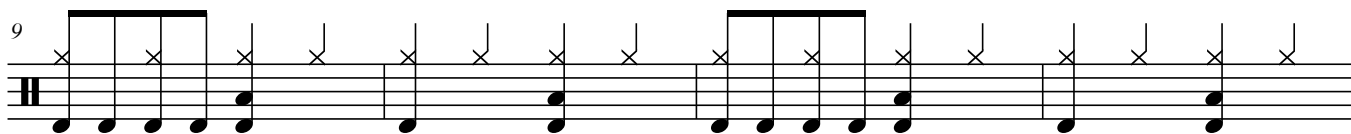
Schluß mit lustig



Jetzt werden auch die 8telnoten mit beiden Füßen abwechselnd gespielt!



Ein bisschen Snare dazu:



...und noch mehr Snare:



# Double Bassdrum 8

Durchgehende 16tel

www.drumattack.com  
www.stickcontrol.de

Drum notation for measures 1-8 in 4/4 time. The top staff shows a continuous 16th-note pattern on the double bass drum. The bottom staff shows a pattern of eighth notes on the snare and hi-hat.

Bass und Hihat:

Detail notation for Bass and Hi-hat for measures 1-8. The top staff shows the hi-hat pattern with 'x' marks, and the bottom staff shows the bass drum pattern.

Bass und Snare:

Detail notation for Bass and Snare for measures 1-8. The top staff shows the bass drum pattern, and the bottom staff shows the snare pattern.

9

Drum notation for measures 9-12. The top staff shows a continuous 16th-note pattern on the double bass drum with 'x' marks. The bottom staff shows a pattern of eighth notes on the snare and hi-hat.

13

Drum notation for measures 13-16. The top staff shows a continuous 16th-note pattern on the double bass drum with 'x' marks. The bottom staff shows a pattern of eighth notes on the snare and hi-hat.

Bass und Hihat

Detail notation for Bass and Hi-hat for measures 13-16. The top staff shows the hi-hat pattern with 'x' marks, and the bottom staff shows the bass drum pattern.

Bass und Snare:

Detail notation for Bass and Snare for measures 13-16. The top staff shows the bass drum pattern, and the bottom staff shows the snare pattern.

21

Drum notation for measures 21-24. The top staff shows a continuous 16th-note pattern on the double bass drum with 'x' marks. The bottom staff shows a pattern of eighth notes on the snare and hi-hat.

Und jetzt ein ganzer Takt!

25

Drum notation for measures 25-28. The top staff shows a continuous 16th-note pattern on the double bass drum with 'x' marks. The bottom staff shows a pattern of eighth notes on the snare and hi-hat.



# Double Bassdrum 9

[www.drumattack.com](http://www.drumattack.com)  
[www.stickcontrol.de](http://www.stickcontrol.de)

Solo

The first staff of music is in 4/4 time and begins with a treble clef. It contains a series of rhythmic patterns for the double bass drum, including eighth notes, quarter notes, and eighth-note beams. The notation includes 'x' marks above notes to indicate specific drum sounds and diamond symbols below notes to indicate other sounds. A repeat sign is present after the first four measures.

The second staff of music continues the drum solo. It features a variety of rhythmic patterns, including eighth notes, quarter notes, and eighth-note beams. The notation includes 'x' marks above notes and diamond symbols below notes. A repeat sign is present after the first four measures.

The third staff of music continues the drum solo. It features a variety of rhythmic patterns, including eighth notes, quarter notes, and eighth-note beams. The notation includes 'x' marks above notes and diamond symbols below notes. A repeat sign is present at the end of the staff.

The fourth staff of music continues the drum solo. It features a variety of rhythmic patterns, including eighth notes, quarter notes, and eighth-note beams. The notation includes 'x' marks above notes and diamond symbols below notes.

The fifth staff of music continues the drum solo. It features a variety of rhythmic patterns, including eighth notes, quarter notes, and eighth-note beams. The notation includes 'x' marks above notes and diamond symbols below notes.

The sixth staff of music continues the drum solo. It features a variety of rhythmic patterns, including eighth notes, quarter notes, and eighth-note beams. The notation includes 'x' marks above notes and diamond symbols below notes.

The seventh staff of music continues the drum solo. It features a variety of rhythmic patterns, including eighth notes, quarter notes, and eighth-note beams. The notation includes 'x' marks above notes and diamond symbols below notes. A repeat sign is present at the end of the staff.

The eighth staff of music continues the drum solo. It features a variety of rhythmic patterns, including eighth notes, quarter notes, and eighth-note beams. The notation includes 'x' marks above notes and diamond symbols below notes.

# Double Bassdrum 10

Triolen

Musical notation for the first staff, measures 1-4. The time signature is 4/4. The pattern consists of a triplet of eighth notes followed by a quarter rest, repeated four times.

Bass und Hihat:

Bass and Hi-hat notation for measures 1-4. The bass line has a triplet of eighth notes. The hi-hat line has 'x' marks above the notes, indicating hi-hat hits.

Bass und Snare:

Bass and Snare notation for measures 1-4. The bass line has a triplet of eighth notes. The snare line has a snare drum hit (indicated by a 'z' symbol) on the second note of the triplet.

Musical notation for the second staff, measures 5-8. The pattern consists of a triplet of eighth notes followed by a quarter note, repeated four times.

Musical notation for the third staff, measures 9-12. The pattern consists of a triplet of eighth notes followed by a quarter note, repeated four times.

Bass und Hihat:

Bass and Hi-hat notation for measures 9-12. The bass line has a triplet of eighth notes. The hi-hat line has 'x' marks above the notes, indicating hi-hat hits.

Bass und Snare:

Bass and Snare notation for measures 9-12. The bass line has a triplet of eighth notes. The snare line has a snare drum hit (indicated by a 'z' symbol) on the second note of the triplet.

Musical notation for the fourth staff, measures 13-16. The pattern consists of a triplet of eighth notes followed by a quarter note, repeated four times.

Und wieder im ganzen Takt:

Musical notation for the fifth staff, measures 17-20. The pattern consists of a triplet of eighth notes followed by a quarter note, repeated four times.

# Double Bassdrum 11

www.drumattack.com  
www.stickcontrol.de

Triolen-Fills

4/4

5

9

13

17

21

25

# Double Bassdrum 12

Ostinato (Plural=Ostinati)

Bassdrumlinie:

Musical notation for the first bass drum line, measures 1-4. The notation is on a single staff with a 4/4 time signature. It features a complex rhythmic pattern of eighth and sixteenth notes, with some notes beamed together and some marked with 'x' for cymbal accents.

Ostinato Nr.1

Musical notation for Ostinato Nr.1, measures 5-8. It shows a single melodic line on a staff with a series of quarter notes, each marked with an 'x' above it, indicating a cymbal accent.

Musical notation for the second bass drum line, measures 9-16. The notation is on a single staff with a 4/4 time signature. It features a complex rhythmic pattern of eighth and sixteenth notes, with some notes beamed together and some marked with 'x' for cymbal accents.

Ostinato Nr 2

Musical notation for Ostinato Nr 2, measures 17-20. It shows a single melodic line on a staff with a series of quarter notes, each marked with an 'x' above it, indicating a cymbal accent.

Musical notation for the third bass drum line, measures 17-24. The notation is on a single staff with a 4/4 time signature. It features a complex rhythmic pattern of eighth and sixteenth notes, with some notes beamed together and some marked with 'x' for cymbal accents.

Und jetzt mixen:

Musical notation for the fourth bass drum line, measures 21-24. The notation is on a single staff with a 4/4 time signature. It features a complex rhythmic pattern of eighth and sixteenth notes, with some notes beamed together and some marked with 'x' for cymbal accents.

Musical notation for the fifth bass drum line, measures 25-32. The notation is on a single staff with a 4/4 time signature. It features a complex rhythmic pattern of eighth and sixteenth notes, with some notes beamed together and some marked with 'x' for cymbal accents.